

Tacony CFC		Valet Wide Area Vac Parts List	
Machine Number:	VWAV		
Series:	A		
Date:	20-Jul-22		
Reference Drawing:	VWAV		
Reference Drawing Issue:	02		
Modified By:	J Clarke		
Service Parts List Issue:	K	ECN #	
Description of Change:	Added lid bracket and screws		

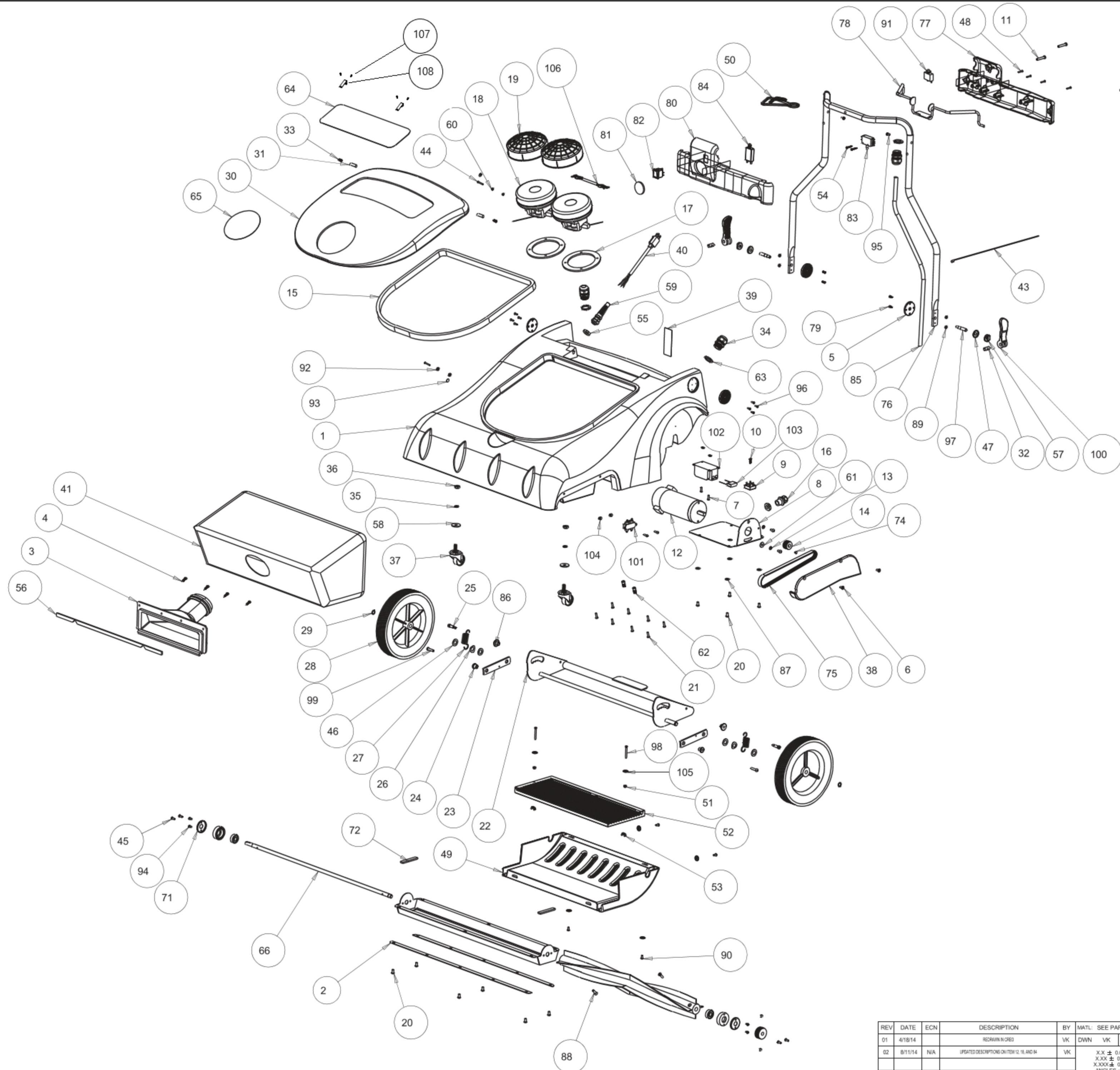
Ref. No.	Part No.	Part Description	Qty
1	33036	CHASSIS	1
2	30077	GASKET, BRUSH SHOE	2
3	33193	FILTER CHUTE	1
4	33195	SCREW, #10-16 X 3/4"L, PNHD, PH, BO, TAP-AB	4
5	19798	BRACKET, GROOVED	4
6	15162	SCREW, 1/4"-20 X 1/2"L, FHD, PH, ZP	2
7	12896	SCREW, #10-32 X 5/8"L, RHDHD, PH, ZP	4
8	19836	MOUNT, BRUSH MOTOR	1
9	33070	BRIDGE RECTIFIER, 35 A	1
10	X8270	SCREW, #10-24 X 5/8"L, PNHD, PH, ZP, TAP-F	1
11	01978	SCREW, 1/4"-20 X 1-1/2"L, RHDHD, PH, ZP	3
12	33501	BRUSH MOTOR, 230V	1
13	7CY002	WASHER, 0.25", LOCK, INTERNAL TOOTH, ZP	8
14	19835	PULLEY, BRUSH, DRIVE	1
15	30079B	GASKET, LID WAV	1
16	PD8	STRAIN RELIEF, LIQ TITE	1
17	30090	GASKET, 5.8" MOTOR	2
18	31306	MOTOR, VACUUM, 230V, 5.8"	2
19	19834	FILTER, VAC INTAKE, 5.8"	2
20	00086	SCREW, 1/4"-20 X 1/2"L, RNDHD, PH, ZP	10
21	30620	SCREW, #10-16 X 3/4"L, PNHD, PH, ZP, TAPTITE	8
22	30491	BRACKET, AXLE ASS'Y, WAV	1
23	19841	ARM, WHEEL PIVOT	2
24	30461	PIVOT SLEEVE, WHEEL	2
25	30617	SCREW, 1/4"-20, SHCS, SHOULDER 5/16"D X 3/4"L	2
26	19818	SPRING, WAHSER, 1/2"	2
27	30466	SPRING, TENSION	2
28	19797	WHEEL, 10", PLASTIC HUB	2
29	30507	SNAP RING, 1/2", EXTERNAL	2
30	33500	LID	1
31	19864	PIN, LID HINGE	2
32	33105	CAM LEVER PIN	2
33	15357	SPRING, LATCH RELEASE	2
34	33191	STRAIN RELIEF, LIQ. TITE	3
35	03536	WASHER, 0.375", LOCK, SPLIT, ZP	2
36	30358	NUT, 3/8"-16, HEX, JAM, ZP	2

37	31209	WHEEL, CASTER	2
38	33057A	BELT COVER	1
39	30618	DECAL, CARPET LEVEL *	1
40	33505	POWER CORD UK, 14AWG, 3COND, 75'L, MALE PL (UK only)	1
40a	04-3989-0000	POWER CORD EURO, 14AWG, 3COND, 75'L, MALE PLUG (EURO d	1
40b	04-3866-0000	POWER CORD AUS, 14AWG, 3 PIN, REWIRABLE (Aus only)	1
41	19816	FILTER BAG, CLOTH	1
42	90701	FILTER BAG PAPER	1
43	18706	WIRE TIE, 15", BLACK	1
44	04735	SCREW, #10-32 X 3/4"	2
45	07535	SCREW TFT (A) R.H.	4
46	19616	WASHER, 0.563", PLAIN, SS	4
47	33106	CAM METAL WASHER	2
48	16924	SCREW, #6-32 X 3/4"L, PNHD, PH, ZP	4
49	19854G	COVER, EXHAUST	1
50	BA00163582	CORD RETAINER BLACK	1
51	01604	NUT-FINISHED HEX #10-32	2
52	19855	EXHAUST FILTER	1
53	19975	NUT-WING (10-32) ZINC PL	2
54	33117	SCREW, #6-13 X 1.25" PLASTITE	2
55	X8008N	NUT-CONDUIT	2
56	33502	GASKET, CHUTE	1
57	33103	CAM PLASTIC WASHER	2
58	03321	WASHER, 0.391", PLAIN, ZP	2
59	19461	STRAIN RELIEF 1/2" NPT	1
60	17376	NUT-HEX. LOCK (KEPS) #6-32	2
61	X8235	WASHER, 0.365", PLAIN, ZP	1
62	B123-2700	WIRE CONNECTOR	2
63	33192	NUT, LOCK, STRAIN RELIEF, NI-PLATE	3
64	X9497	DECAL, RECTANGLE	1
65	X9498	DECAL LARGE ROUND	1
66	19808	AXLE, BRUSH	1
71	19848	THREAD GUARD	2
72	32896	GASKET	2
74	02011	SCREW, 1/4"-20 X 5/16"L, SET, ALLEN, CUPPNT	3
75	19802	BELT, BRUSH DRIVE	1
76	19829	HANDLE, MAIN	1
77	33190	SWITCH BOX, BOTTOM	1
78	19849	TRIGGER, BRUSH SWITCH	1
79	X8278	SCREW, #8-32 X 1/2", FHD, StSt	4
80	33189	SWITCH BOX, TOP	1
81	X9499	DECAL, SMALL CIRCLE	1
82	32966	SWITCH, ROCKER, DPST, 20A	1
83	19357	SWITCH, PUSH BUTTON, DPST, 20A	1
84	31368	CIRCUIT BREAKER, PUSH BUTTON, 1.6A	1
85	33452	CONTROL CABLE	1
86	30464	PIVOT SLEEVE, WHEEL	2
87	00851	WASHER-PLAIN 1/4"	4
88	11276A	SCREW, 1/4"-20 X 7/8"L, FHD, PH, ZP	1
89	X8260	NUT, HEX #8-32 ZP	4

90	03660	SCREW, #10-24 X 7/16"L, PNHD, PH, ZP	4
91	32964	10 AMP CIRCUIT BREAKER	1
92	10892	NUT-HEX LOCK #10-24	2
93	X9214	GROUND LABEL	2
94	16142	SCREW, #8-18 X 3/8"L, PNHD, PH, ZP, TAP-AB	4
95	03261	SCREW, TCT(F) PAN HEAD, #10-32	2
96	33114	SCREW, #8-32 X 1/2"L, FHD, SOCKET, BO	8
97	33104	METAL STUD, CAM LEVER	2
98	33630	SCREW, #10-32 X 1-3/4"L, FHD, PH, ZP	2
99	19999	SCREW, 1/4"-20 X 1-1/4"L, RHDHD, PH, ZP	2
100	33102	CAM LEVER HANDLE	2
101	33508	EMI FILTER, MOTOR	1
102	33506	EMI FILTER, POWER	1
103	33628	CAPACITOR, EMI FILTER	1
104	02625	NUT-HEX. LOCK (KEPS) #10-32	4
105	11385	WASHER, SEALING #10	6
106	33504	WIRING HARNESS	1
107	X9370	BLACK OXIDE STEEL PAN HEAD PHILLIPS SCREW	4
108	X2090	BRACKET, WAV LID HINGE	2

Ref. No.	Part No.	Part Description	Qty
	19870	Assembly, Brush WAV Consists of:	
1	02011	SCREW SOCKET HEAD SET 1/4-20 X 5/16 BLACK OXIDE	2
2	07535	SCREW 8-15 X 3/8	4
3	11276	SCREW FLAT HEAD MACHINE 1/4-20 X 7/8 ZP	2
4	16142	SCREW PHILLIPS PAN HEAD MACHINE 10-32 X 1/2 Z/P	4
5	19804	BRUSH DRIVE PULLEY	1
6	19805	BEARING BLOCK	2
7	19808	BRUSH AXLE	1
8	19809	AXLE BRUSH BEARING	2
9	19810	SHOE BRUSH MOUNT	1
10	19811	BRUSH 28"	1
11	19848	THREAD GUARD	2
12	32896	GASKET BRUSH ASSEMBLY 3/16 X 1/2 X 3	2
13	x1298	VWAV BRUSH ROLL ASSEMBLY	1
14	07858	VWAV SPRING FINGER	2

Ref. No.	Part No.	Part Description	Qty
	19984	Handle, WAV, 230V Consisting of:	
1	16924	SCREW PHILLIPS PAN HEAD 6-32 X 3/4 ZP	4
2	01987	SCREW PHILLIPS PAN HEAD 1/4-20 X 1-1/2L	3
3	3261	SCREW PAN HEAD #10-32	1
4	18706	WIRE TIE 15" BLACK	4
5	19357	PUSH SWITCH 20AMP 125-250VAC	1
6	19798	HANDLE BRACKET SPIRAL GROOVED	2
7	19829	MAIN HANDLE BLACK	1
8	19849	TRIGGER BRUSH SWITCH	1
9	X8260	LOCKING NUT HEX HEAD 8-32 ZP	4
10	31368	CIRCUIT BREAKER 1.6AMP	1
11	32964	CIRCUIT BREAKER 10AMP	1
12	32966	SWITH ON/OFF DOUBLE POLE	1
13	X8278	SCREW 8-32 X 1/2	4
14	33189	SWITCH BOX TOP	1
15	33190	SWITCH BOX BOTTOM	1
16	33191	STRAIN RELIEF COMPLETE WITH NUT 33192	1
17	33192	NUT FOR STRAIN RELIEF 33191	1
18	33194	SCREW 6-13 X 1"	2
19	33452	HANDLE CONTROL CABLE	1



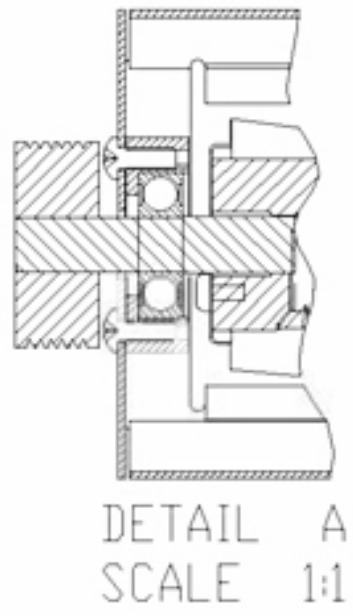
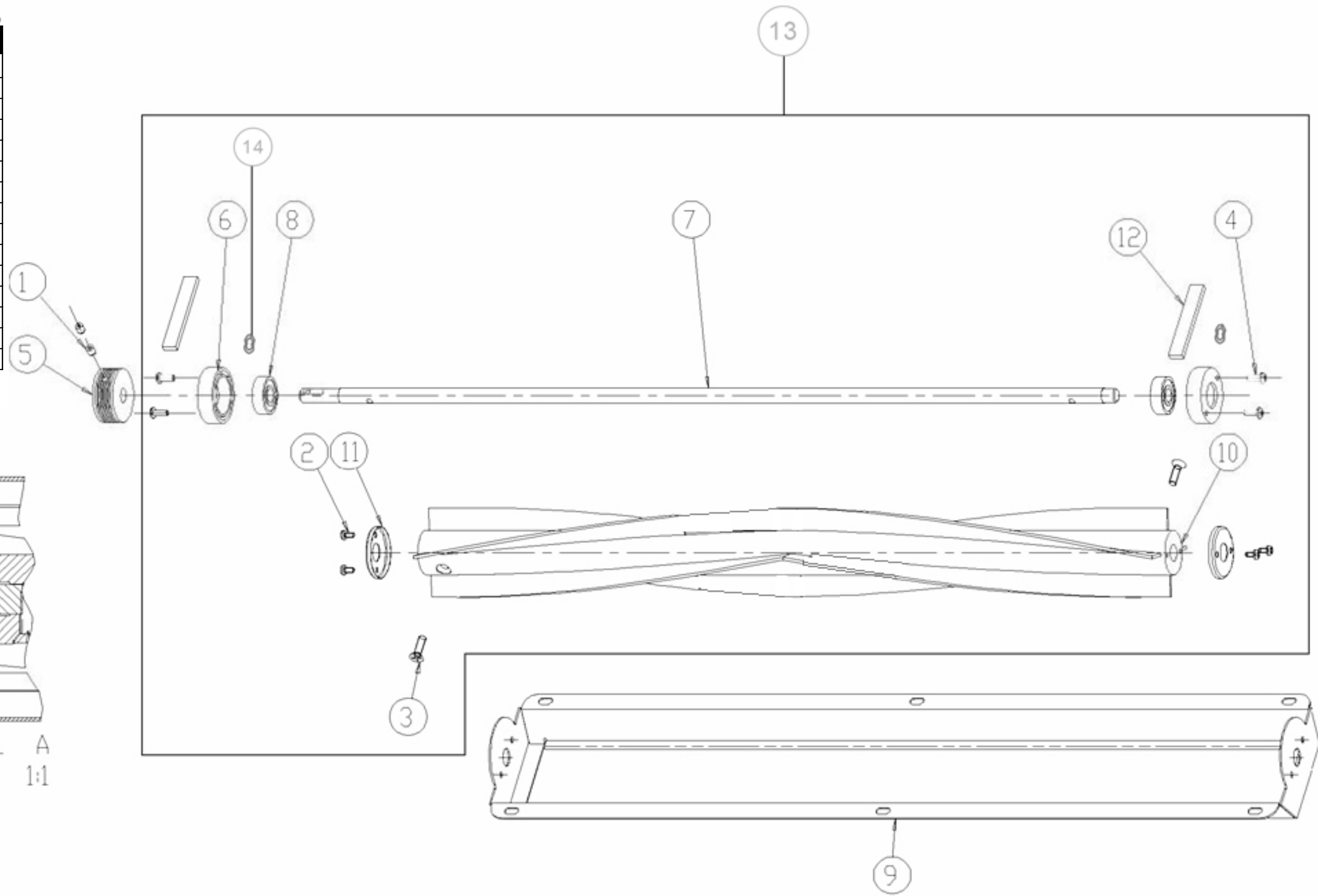
REV	DATE	ECN	DESCRIPTION	BY	MATL	SEE PART DRAWINGS	FINISH	SEE PART DRAWINGS	TRUVOX	
01	4/18/14		REDRAW IN CREO	VK	DWN	VK	DATE	4/15/14	SCALE	1:7
02	8/11/14	N/A	UPDATED DESCRIPTION ON ITEM 12, 16, AND 18	VK					SHEET	1 of 1
									COMMERCIAL FLOOR CARE EQUIPMENT	
									DESCRIPTION	
									WIDE AREA VACUUM	
									REV MODEL	00
									REV DRAWING	02
									PN:	93031TV

3101 WARREN COURT
FORT WORTH, TX 76140-1700

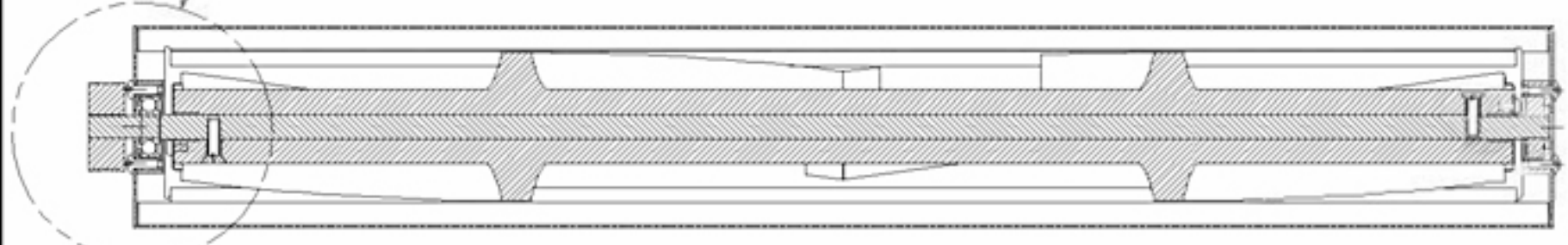
FACILITY CORP. RIGHTS IN THE MATERIAL
DISCLOSED HEREIN. THIS DRAWING IS
ISSUED FOR ENGINEERING INFORMATION
ONLY. IT MAY NOT BE REPRODUCED, COPIED,
MADE OR USED FOR ANY OTHER PURPOSES
WITHOUT WRITTEN PERMISSION FROM FACILITY CORP.

PART NUMBER **19870**

Ref. No.	Part No.	Part Description	Qty
	19870	Brush Assembly Consisting of:	
1	02011	SCREW SOCKET HEAD SET 1/4-20 X 5/16 BLACK OXIDE	2
2	07535	SCREW 8-15 X 3/8	4
3	11276	SCREW FLAT HEAD MACHINE 1/4-20 X 7/8 ZP	2
4	16142	SCREW PHILLIPS PAN HEAD MACHINE 10-32 X 1/2 Z/P	4
5	19804	BRUSH DRIVE PULLEY	1
6	19805	BEARING BLOCK	2
7	19808	BRUSH AXLE	1
8	19809	AXLE BRUSH BEARING	2
9	19810	SHOE BRUSH MOUNT	1
10	19811	BRUSH 28"	1
11	19848	THREAD GUARD	2
12	32896	GASKET BRUSH ASSEMBLY 3/16 X 1/2 X 3	2
13	x1298	VWAV BRUSH ROLL ASSEMBLY	1
14	07858	VWAV SPRING FINGER	2



SEE DETAIL A

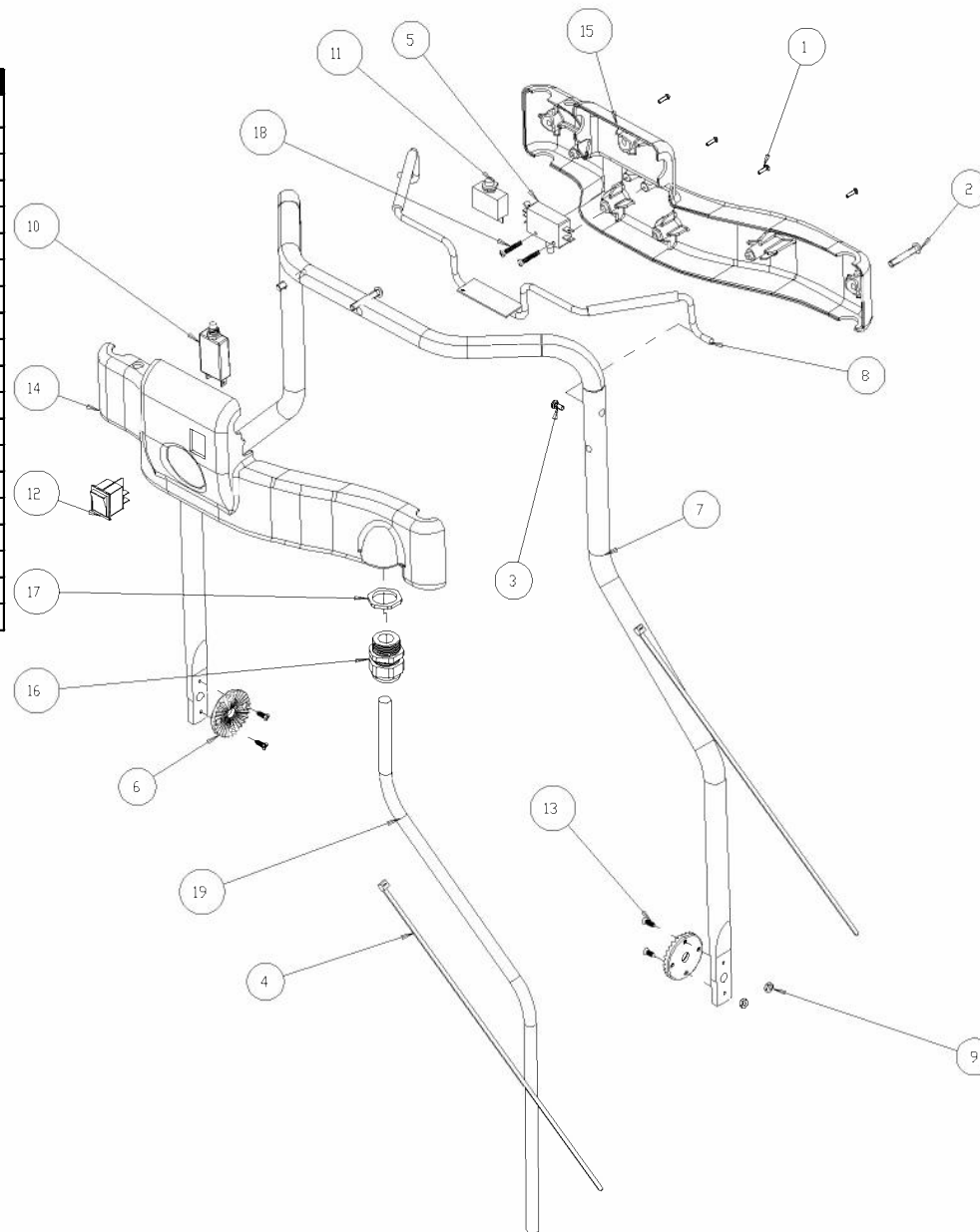


SECTION A-A

REV	DATE	ECN	DESCRIPTION	BY	MATERIAL	FINISH	Taconomy COMMERCIAL FLOOR CARE		3101 Wichita Court Fort Worth, TX 76140-1755	
E	06/07	10741	REMOVED 19838	TNC	DWN OM	DATE 05/98	SCALE NTS	SHEET 1 OF 1		
D	02/00	10297	REMOVED 19837 & 19806 ADDED 07535 & 19848	XAZ	UNLESS OTHERWISE NOTED ALL TOLERANCES ARE ±0.02		TACONY CORPORATION CLAIMS PROPRIETARY RIGHTS IN THE MATERIAL DISCLOSED HEREIN. THIS DRAWING IS ISSUED FOR ENGINEERING INFORMATION ONLY. IT MAY NOT BE REPRODUCED, NOR MAY THE INFORMATION HEREIN BE USED FOR MANUFACTURING PURPOSES WITHOUT WRITTEN PERMISSION FROM TACONY CORP.		DESCRIPTION	ASSY, BRUSH, WAV
C	12/99	10104	REMOVED 19848	TH			A	PART NUMBER	19870	REV E

PART NUMBER **19984**

Ref. No.	Part No.	Part Description	Qty
	19984	Handle , WAV, 230V Consisting of:	
1	16924	SCREW PHILLIPS PAN HEAD 6-32 X 3/4 ZP	4
2	01987	SCREW PHILLIPS PAN HEAD 1/4-20 X 1-1/2L	3
3	03261	SCREW PAN HEAD #10-32	1
4	18706	WIRE TIE 15" BLACK	4
5	19357	PUSH SWITCH 20AMP 125-250VAC	1
6	19798	HANDLE BRACKET SPIRAL GROOVED	2
7	19829	MAIN HANDLE BLACK	1
8	19849	TRIGGER BRUSH SWITCH	1
9	X8260	LOCKING NUT HEX HEAD 8-32 ZP	4
10	31368	CIRCUIT BREAKER 1.6AMP	1
11	32964	CIRCUIT BREAKER 10AMP	1
12	32966	SWITCH ON/OFF DOUBLE POLE	1
13	X8278	SCREW PHILLIPS PAN HEAD 8-32 x 1/2 BLACK ZP	4
14	33189	SWITCH BOX TOP	1
15	33190	SWITCH BOX BOTTOM	1
16	33191	STRAIN RELIEF COMPLETE WITH NUT 33192	1
17	33192	NUT FOR STRAIN RELIEF 33191	1
18	33194	SCREW 6-13 X 1"	2
19	33452	HANDLE CONTROL CABLE	1

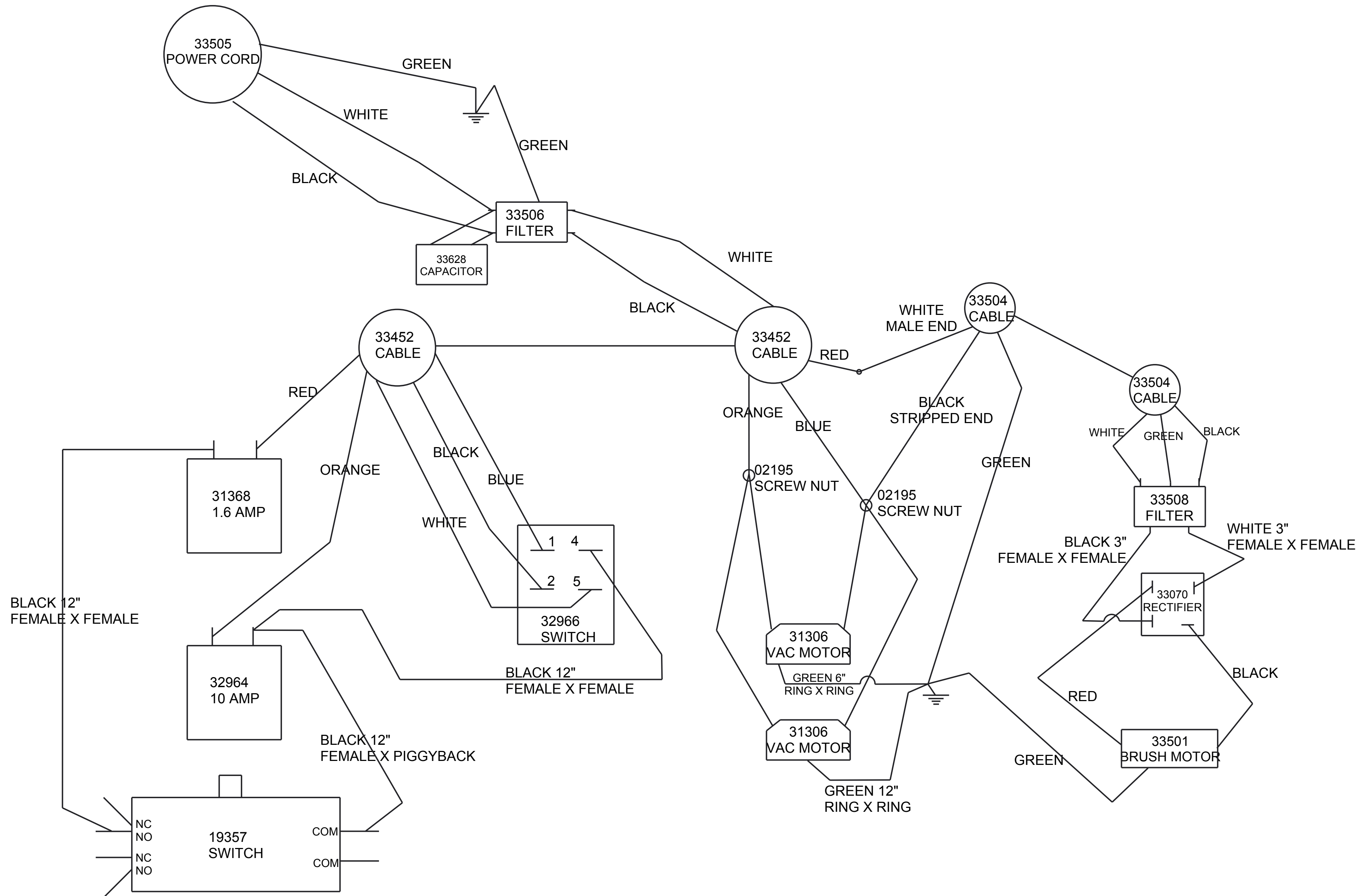


REV	DATE	ECN	DESCRIPTION	BY	MATERIAL	FINISH
A	4/08	10787	NEW RELEASE	KM	DWN KM	SCALE - SHEET 1 OF 1
B	4/24/09	-	NEW RELEASE	AR	UNLESS OTHERWISE NOTED ALL TOLERANCES ARE ±0.02	TACOY CORPORATION CLAIMS PROPRIETARY RIGHTS IN THE MATERIAL DISCLOSED HEREIN. THIS DRAWING IS ISSUED FOR ENGINEERING INFORMATION ONLY. IT MAY NOT BE REPRODUCED, NOR MAY THE INFORMATION HEREIN BE USED FOR MANUFACTURING PURPOSES WITHOUT WRITTEN PERMISSION FROM TACOY CORP.
C	1/15/14		CHANGED CIRCUIT BREAKER	VK		

Tacony
 COMMERCIAL FLOOR CARE

3101 Wichita Court
 Fort Worth, TX 76140-1755

DESCRIPTION **HANDLE, WAV, 230V**
 PART NUMBER **19984** REV **C**



★ STAR DENOTES CRITICAL DIMENSION

REV	DATE	ECN	DESCRIPTION	BY	CBY	MATL	SEE PARTS	FINISH	SEE PARTS	TRUVOX				
01	8/19/14	N/A	UPDATED BREAKER FROM 32935 TO 31368	VK	KK	DWN	KM	DATE	02/08	SCALE	-	SHEET	1 of 1	COMMERCIAL FLOOR CARE EQUIPMENT
02	8/20/14	N/A	UPDATED RECTIFIER WIRING	VK	KK									
03	8/20/14	N/A	RECTIFIER WAS 33061 NOW 33070	KK	KK									
							X.X ± 0.5 MM	TACONY CORPORATION CLAIMS PROPRIETARY RIGHTS IN THE MATERIAL DISCLOSED HEREIN. THIS DRAWING IS ISSUED FOR ENGINEERING INFORMATION ONLY. IT MAY NOT BE REPRODUCED, NOR MAY THE INFORMATION HEREIN BE USED FOR MANUFACTURING PURPOSES WITHOUT WRITTEN PERMISSION FROM TACONY CORP.		3101 Wichita Court Fort Worth, TX 76140-1755		DESCRIPTION: WAV 230V		
							X.XX ± 0.2 MM			C		PN: 93031TV		
							X.XXX ± 0.1 MM							
							ANGLES ± 0.5							
							BREAK SHARP EDGES TO 0.2 MM							