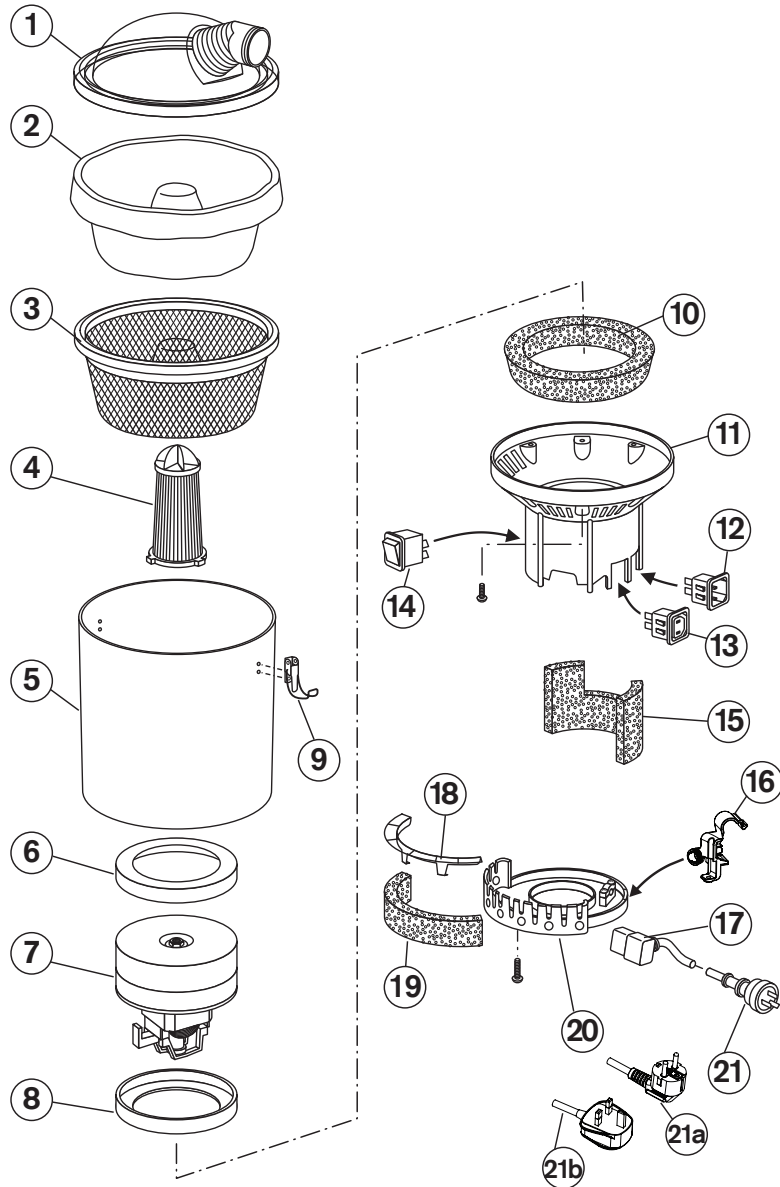


Superpro 700



PERFORMANCE AT ITS PEAK

Model Number: 01PR700VB



No. Part Name

1. Lid - Plastic - Clear - 270mm
2. Dust Bag - Disposable - Paper - Cone - Pkt 5
3. Dust Bag - Reusable - SMS - Cone - Pkt 1
4. Filter - Pre-Motor - Cartridge - HEPA
5. Canister - Pro 700
6. Gasket - Motor - Rubber - 150mm
7. Motor - Two Stage - Flow Through - 240V - 1000W
8. Gasket - Motor - Rubber - 150mm
9. Latch - Aluminium - Silver - 65mm
10. Insulation - Noise - Foam - 180mm
11. Intermediate Housing - Insert - Power Outlet - IEC C17 - Power Inlet - IEC C14 - Blue
12. Power Inlet - IEC C14 - Panel Mount
13. Power Outlet - IEC C17 - Panel Mount
14. Switch - On-Off - Non-Illuminated - Black
15. Insulation - Motor - Foam - 420mm
16. Holder - Short Lead - Plastic - Black
17. Short Lead - IEC C13 Vertical Right Angle - 420mm - 3C - Plug Type I
18. Cage - Motor Filter - Plastic - Black
19. Filter - Exhaust - Flat - Foam
20. Bottom Cap - Plastic - Black - 175mm
21. Extension Lead - 18m - 3C - Plug Type I
- 21a. Power Cord - IEC C13 Vertical Right Angle - 18m - 3C - Plug Type G
- 21b. Power Cord - IEC C13 Vertical Right Angle - 18m - 3C - Plug Type E/F

Part No.

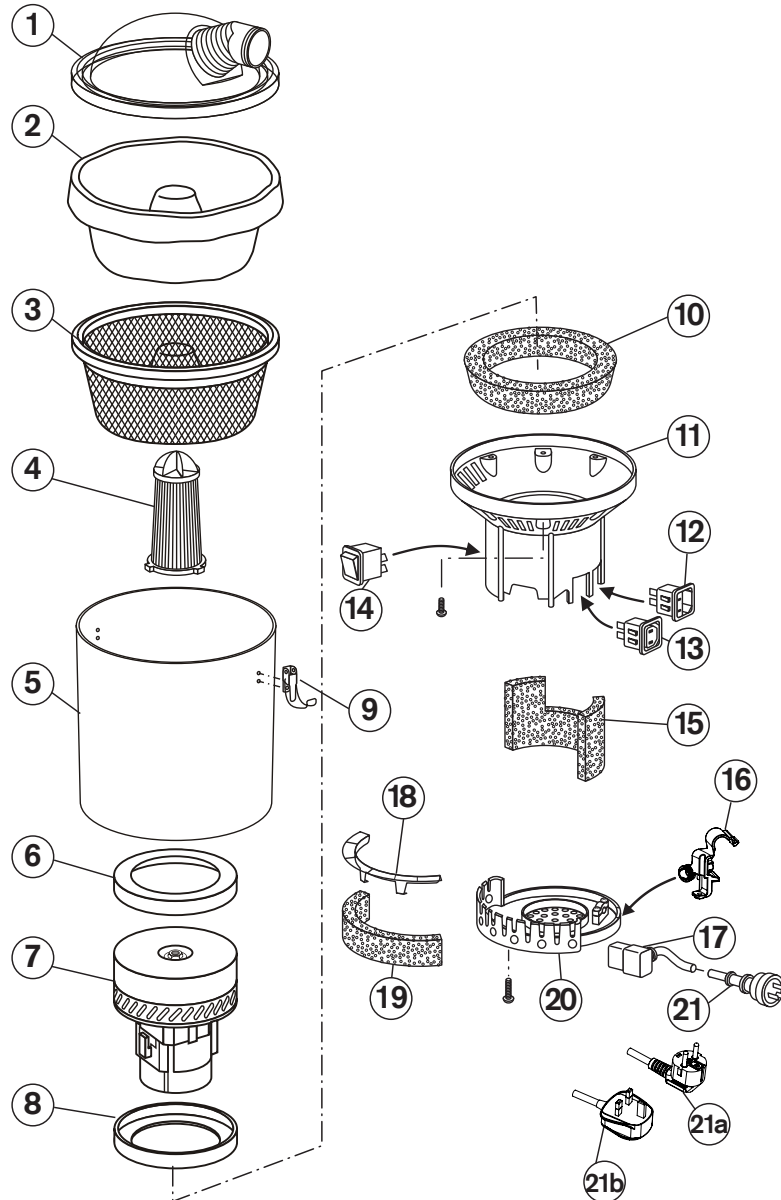
- LID001
 DUB001
 DUB003
 FIL001
 CAN001
 GAS007
 MOT001
 GAS007
 LAT001
 INS008
 INH008
 PWI002
 PWO001
 SWI001
 INS009
 HOL004
 SHL001
 CAG001
 FIL004
 BOT001
 EXL001
 PWC007
 PWC006

Specifications

Volts / Frequency: 220-240V~50Hz
 Motor: 240V 1000W Two Stage Flow Through
 Noise Level: 67dB(A) ± 3dB(A) (at 1.5m)
 Filtration: 4 stage, HEPA Rated Hypercone™ Filter
 Volumetric Airflow (per second): 38 litres
 Capacity: 5 litres
 Weight: 5.2kg (excluding power cord assembly and hose)
 Vibration Level: ≤2.5m/s²

Technical specifications, part numbers and parts profiles are subject to change without notice.

Model Number: 01DU700VB



No. Part Name

1. Lid - Plastic - Clear - 270mm
2. Dust Bag - Disposable - Paper - Cone - Pkt 5
3. Dust Bag - Reusable - SMS - Cone - Pkt 1
4. Filter - Pre-Motor - Cartridge - HEPA
5. Canister - Duo 700
6. Gasket - Motor - Rubber - 150mm
7. Motor - Two Stage - By Pass - 250V - 1000W
8. Gasket - Motor - Rubber - 150mm
9. Latch - Aluminium - Silver - 65mm
10. Insulation - Noise - Foam - 180mm
11. Intermediate Housing - Insert - Power Outlet - IEC C17 - Power Inlet - IEC C14 - Blue
12. Power Inlet - IEC C14 - Panel Mount
13. Power Outlet - IEC C17 - Panel Mount
14. Switch - On-Off - Non-Illuminated - Black
15. Insulation - Motor - Foam - 420mm
16. Holder - Short Lead - Plastic - Black
17. Short Lead - IEC C13 Vertical Right Angle - 420mm - 3C - Plug Type I
18. Cage - Motor Filter - Plastic - Black
19. Filter - Exhaust - Flat - Foam
20. Bottom Cap - Plastic - Black - By-Pass - 175mm
21. Extension Lead - 18m - 3C - Plug Type I
- 21a. Power Cord - IEC C13 Vertical Right Angle - 18m - 3C - Plug Type G
- 21b. Power Cord - IEC C13 Vertical Right Angle - 18m - 3C - Plug Type E/F

Part No.

- LID001
- DUB001
- DUB003
- FIL001
- CAN004
- GAS007
- MOT003
- GAS007
- LAT001
- INS008
- INH008
- PWI002
- PWO001
- SWI001
- INS009
- HOL004
- SHL001
- CAG001
- FIL004
- BOT002
- EXL001
- PWC007
- PWC006

Specifications

Volts / Frequency: 220-240V~50Hz
 Motor: 250V 1000W Two Stage By-pass
 Noise Level: 74dB(A) ± 3dB(A) (at 1.5m)
 Filtration: 4 stage, HEPA Rated Hypercone™ Filter
 Volumetric Airflow (per second): 38 litres
 Capacity: 5 litres
 Weight: 5.3kg (excluding power cord assembly and hose)
 Vibration Level: ≤2.5m/s²

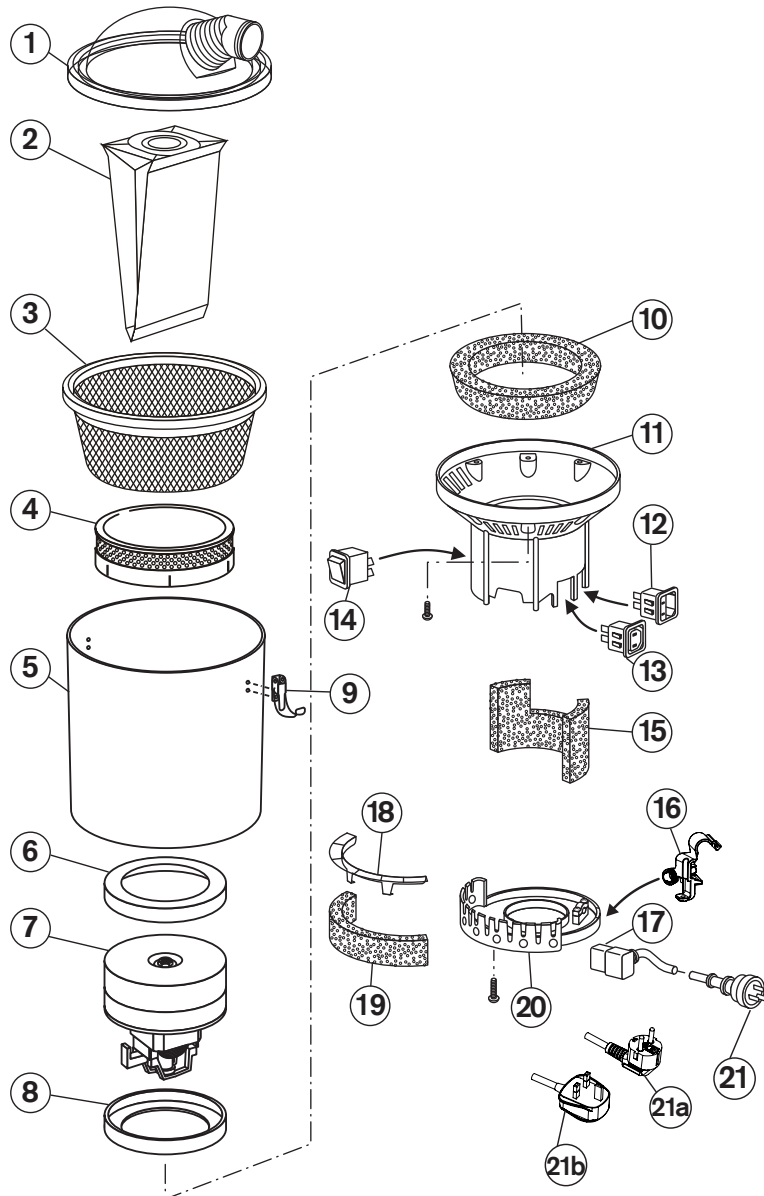
Technical specifications, part numbers and parts profiles are subject to change without notice.

Superpro micron700



PERFORMANCE AT ITS PEAK

Model Number: 01MI700VB



No. Part Name

1. Lid - Plastic - Clear - 270mm
2. Dust Bag - Disposable - Paper - Sealed - Pkt 5
3. Dust Bag - Reusable - SMS - Bucket - Pkt 1
4. Filter - Pre-Motor - Cartridge - HEPA
5. Canister - Micron 700
6. Gasket - Motor - Rubber - 150mm
7. Motor - Two Stage - Flow Through - 240V - 1000W
8. Gasket - Motor - Rubber - 150mm
9. Latch - Aluminium - Silver - 65mm
10. Insulation - Noise - Foam - 180mm
11. Intermediate Housing - Insert - Power Outlet - IEC C17 - Power Inlet - IEC C14 - Blue
12. Power Inlet - IEC C14 - Panel Mount
13. Power Outlet - IEC C17 - Panel Mount
14. Switch - On-Off - Non-Illuminated - Black
15. Insulation - Motor - Foam - 420mm
16. Holder - Short Lead - Plastic - Black
17. Short Lead - IEC C13 Vertical Right Angle - 420mm - 3C - Plug Type I
18. Cage - Motor Filter - Plastic - Black
19. Filter - Exhaust - Flat - Foam
20. Bottom Cap - Plastic - Black - 175mm
21. Extension Lead - 18m - 3C - Plug Type I
- 21a. Power Cord - IEC C13 Vertical Right Angle - 18m - 3C - Plug Type G
- 21b. Power Cord - IEC C13 Vertical Right Angle - 18m - 3C - Plug Type E/F

Part No.

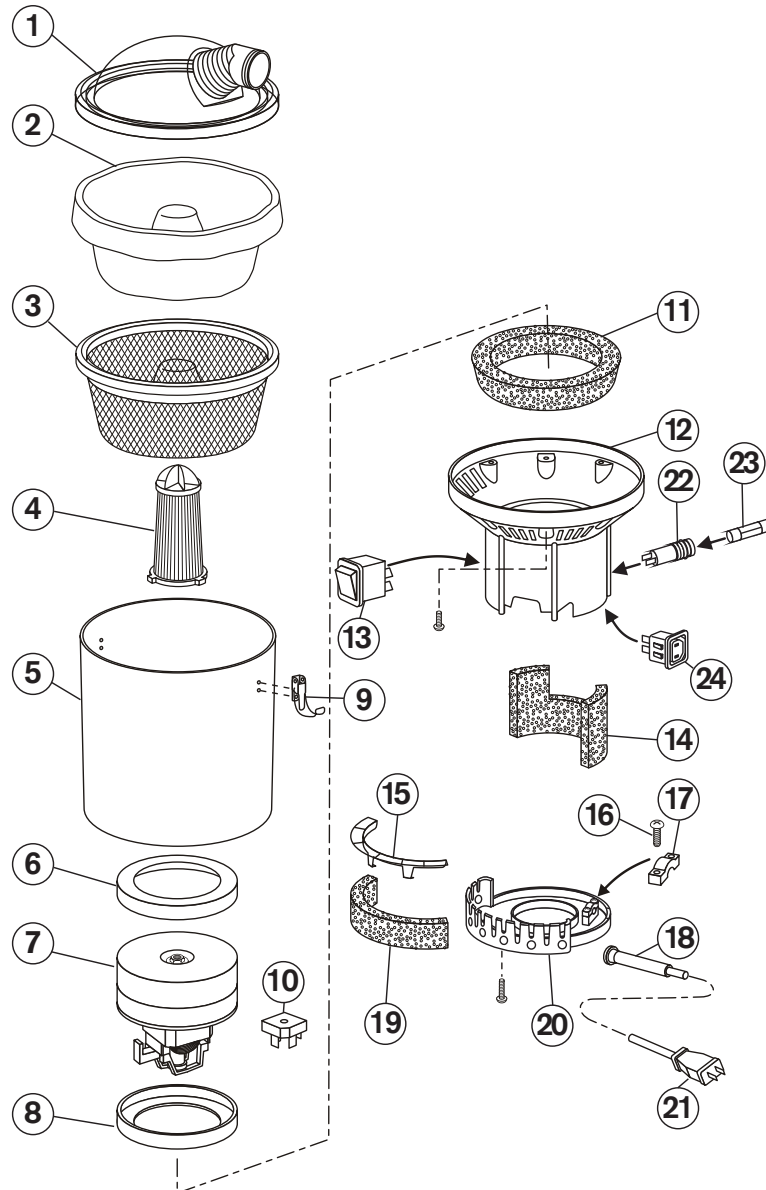
- LID001
- DUB004
- DUB007
- FIL003
- CAN005
- GAS007
- MOT001
- GAS007
- LAT001
- INS008
- INH008
- PWI002
- PWO001
- SWI001
- INS009
- HOL004
- SHL001
- CAG001
- FIL004
- BOT001
- EXL001
- PWC007
- PWC006

Specifications

Volts / Frequency: 220-240V~50Hz
 Motor: 240V 1000W Two Stage Flow Through
 Noise Level: 65dB(A) ± 3dB(A) (at 1.5m)
 Filtration: 4 stage, HEPA Rated High Grade Filter
 Volumetric Airflow (per second): 39 litres
 Capacity: 5 litres
 Weight: 5.3kg (excluding power cord assembly and hose)
 Vibration Level: ≤2.5m/s²

Technical specifications, part numbers and parts profiles are subject to change without notice.

Model Number: 01TR700VB



No. Part Name

1. Lid - Plastic - Clear - 270mm
2. Dust Bag - Disposable - Paper - Cone - Pkt 5
3. Dust Bag - Reusable - SMS - Cone - Pkt 1
4. Filter - Pre-Motor - Cartridge - HEPA
5. Canister - Trans 700
6. Gasket - Motor - Rubber - 150mm
7. Motor - Two Stage - Flow Through - 120V - 950W
8. Seal - Motor - Rubber - 145mm
9. Latch - Aluminium - Silver - 65mm
10. Electrical - Bridge Rectifier - 35A
11. Insulation - Noise - Foam - 180mm
12. Intermediate Housing - Insert - Power Outlet - IEC C17 - Blue
13. Switch - On-Off - Non-Illuminated - Black
14. Insulation - Motor - Foam - 420mm
15. Cage - Motor Filter - Plastic - Black
16. Screw - Aluminium - 1mm x 9mm
17. Clamp - Cable - Plastic - White - 34mm
18. Grommet - Cable - Rubber - Black - 48mm
19. Filter - Exhaust - Flat - Foam
20. Bottom Cap - Plastic - Black - 175mm
21. Power Cord - Hard Wired - 18m - 2C - Plug Type A
22. Holder - Fuse - Plastic - Black - 42mm
23. Electrical - Fuse - Time Lag - 10A
24. Power Outlet - IEC C17 - Panel Mount

Part No.

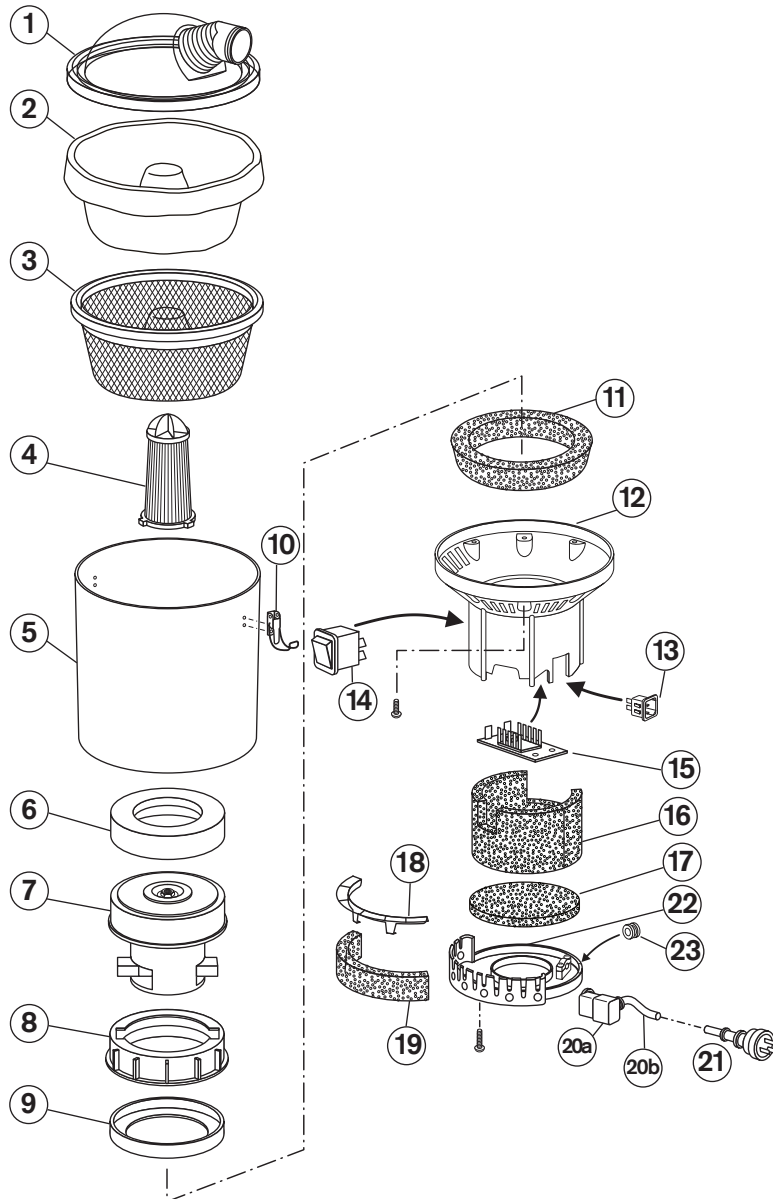
- LID001
- DUB001
- DUB003
- FIL001
- CAN006
- GAS007
- MOT004
- SEA002
- LAT001
- ELE005
- INS008
- INH007
- SWI001
- INS009
- CAG001
- SCR007
- CLA001
- GRO001
- FIL004
- BOT001
- PWC008
- HOL009
- ELE006
- PWO001

Specifications

Volts / Frequency: 120V~400Hz
 Motor: 120V 850W Two Stage Flow Through
 Noise Level: 63dB(A) ± 3dB(A) (at 1.5m)
 Filtration: 4 stage, HEPA Rated Hypercone™ Filter
 Volumetric Airflow (per second): 29 litres
 Capacity: 5 litres
 Weight: 5.1kg (excluding power cord assembly and hose)
 Vibration Level: ≤2.5m/s²

Technical specifications, part numbers and parts profiles are subject to change without notice.

Model Number: 01WI700VB



No. Part Name

1. Lid - Plastic - Clear - 270mm
2. Dust Bag - Disposable - Paper - Cone - Pkt 5
3. Dust Bag - Reusable - SMS - Cone - Pkt 1
4. Filter - Pre-Motor - Cartridge - HEPA
5. Canister - Wispa 700
6. Gasket - Motor - Foam - 145mm
7. Motor - Single Stage - Flow Through - 240V - 1300W
8. Spacer - Motor - Plastic - 145mm
9. Gasket - Motor - Rubber - 150mm
10. Latch - Aluminium - Silver - 65mm
11. Insulation - Noise - Foam - 180mm
12. Intermediate Housing - Insert - Power Inlet - IEC C16 - Blue
13. Power Inlet - IEC C16 - Panel Mount
14. Switch - Hi-Low - Non-Illuminated - Black
15. PCB - Two Speed - AC
16. Insulation - Noise - Foam - 430mm
17. Insulation - Motor - Foam - 165mm
18. Cage - Motor Filter - Plastic - Black
19. Insulation - Noise - Foam - 200mm
- 20a. Power Plug - Female - IEC C15 Horizontal Right Angle - Hot Conditioned - Plastic - Black
- 20b. Short Lead - Hard Wired - 420mm - 3C - Plug Type I
21. Extension Lead - 18m - 3C - Plug Type I
22. Bottom Cap - Plastic - Black - 175mm
23. Cap - Blank - Plastic - Blue - 17mm

Part No.

- LID001
- DUB001
- DUB003
- FIL001
- CAN007
- GAS010
- MOT005
- SPA002
- GAS007
- LAT001
- INS004
- INH006
- PWI001
- SWI002
- PCB002
- INS005
- INS006
- CAG001
- INS007
- PWP005
- SHL006
- EXL001
- BOT001
- CAP006

Specifications

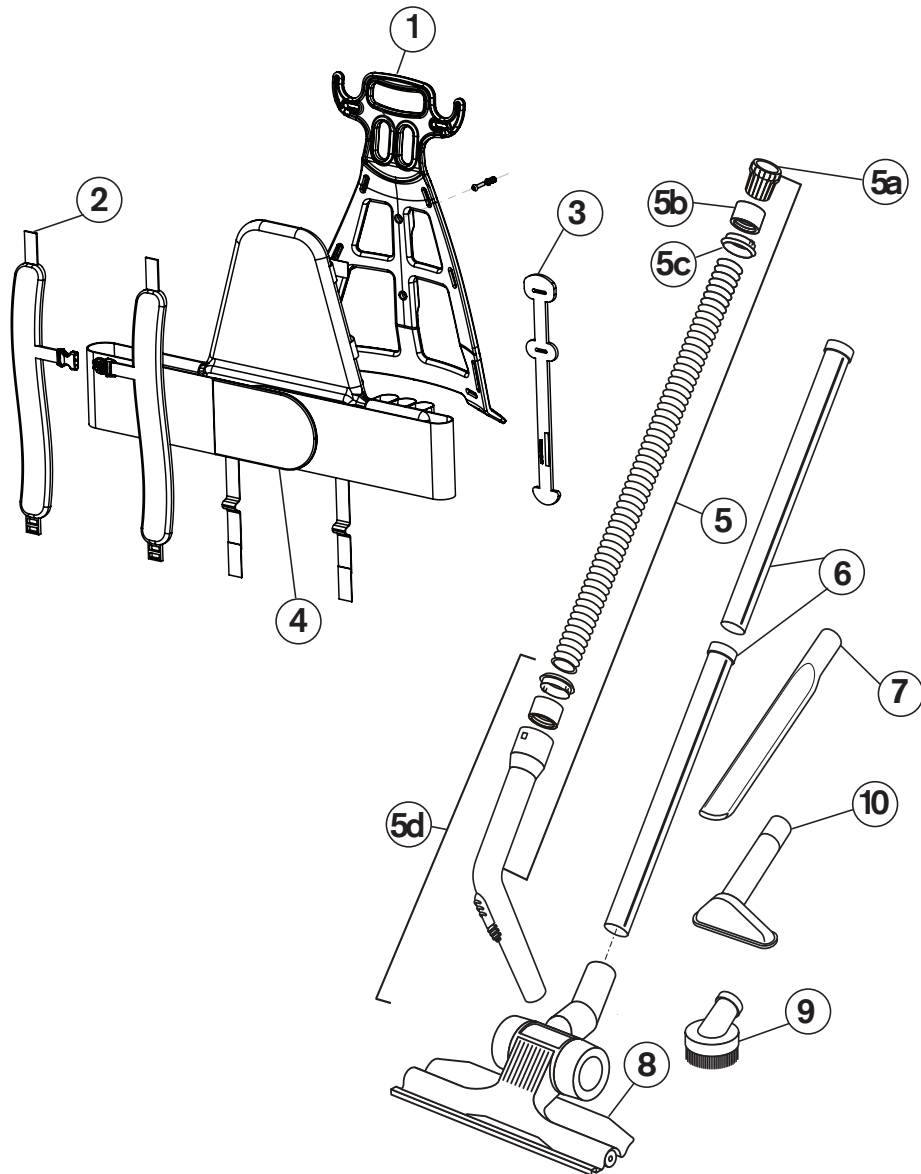
Volts / Frequency: 220-240V~50Hz
 Motor: 240V 1300W Single Stage Flow Through
 Noise Level: Normal mode 66dB(A) ± 3dB(A) (at 1.5m) / Wispa mode 62dB(A) ± 3dB(A) (at 1.5m)
 Filtration: 4 stage, HEPA Rated Hypercone™ Filter
 Volumetric Airflow (per second): 37 litres; wispa mode 31 litres
 Capacity: 5 litres
 Weight: 4.7kg (excluding power cord assembly and hose)
 Vibration Level: ≤2.5m/s²

Technical specifications, part numbers and parts profiles are subject to change without notice.

Superpro 700 Series Harness and Accessories



PERFORMANCE AT ITS PEAK



No. Part Name

1. Frame - Backpack - Plastic - Black - 530mm
2. Strap - Shoulder - Padded - Black - Pkt 2
3. Cord Restraint - Rubber
4. Harness - Padded Back - Elastic Velcro Hip Band
5. Hose Assembly - 32mm - 1.2m - Screw Fit
- 5a. Connector - Hose - Plastic - Black - 32mm
- 5b. Cuff - Hose - Plastic - Black - 32mm
- 5c. Clip - Hose - Plastic - Black - 32mm
- 5d. Hand Piece - 32mm - Plastic
6. Wand - Two Piece - Chrome - 32mm
7. Accessory - Crevice Tool - 32mm
8. Floor Tool - All Purpose - 32mm - 285mm
9. Accessory - Dusting Brush - 32mm
10. Accessory - Upholstery Tool - 32mm

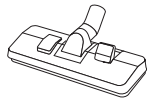
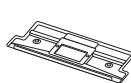

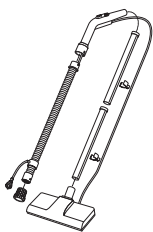


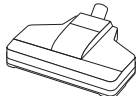
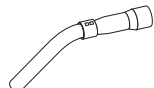
Part No.

- FRA001
STP003
COR001
HAR001
HOA001
CON001
CUF002
CLI004
HAP001
WND002
ACC002
FLT001
ACC001
ACC003

Optional Extras

11. Floor Tool - Combination - 32mm - 270mm
12. Floor Tool Fitting - Plate - 270mm
13. Floor Tool - Hard Surface - 32mm - 300mm
14. RCD - Piggy Back - Plug Type I
15. Floor Tool - Turbo Head - 32mm - 280mm
16. Hand Piece - 32mm - Chrome
17. Floor Tool - Power Head - 32-38mm - 305mm
18. Wand - Telescopic - Chrome - 32mm

- FLT003
FLF001
FLT005
RCD003
FLT007
HAP003
FLT014
WND001

| | | | | |
|---|---|---|---|---|
| 11  | 12  | 13  | 17  | 18  |
| 14  | 15  | 16  | | |

Technical specifications, part numbers and parts profiles are subject to change without notice.